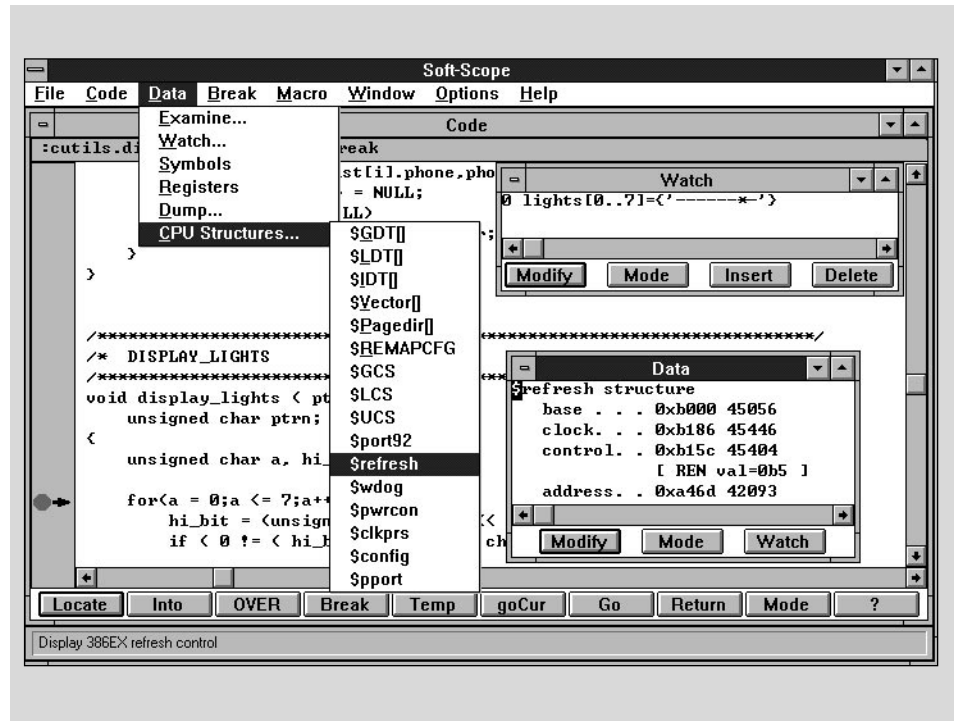


## Soft-Scope\* Remote-Target Debugger

- Supports Real- and Protected-Mode 16/32-Bit Embedded Applications
- Available as a Windows\* or DOS Application
- Supports C/C++ Compilers from Microsoft, Borland, Watcom, MetaWare and Intel
- Royalty-Free CSi-Mon Monitor and Complete Source Code Included
- Supports Popular ICEs, Logic Analyzers, RTOS Kernels and Embedded PC Boards
- Access Memory and View Data References While Target is Running
- Supports Extended Registers, GDT, IDT, LDT Descriptor Tables and Protection Traps
- Stop Target When No Breakpoints Are Set
- Set Software and Hardware (386 and Up) Breakpoints in RAM and ROM



Soft-Scope\* is a source-level, remote-target debugger that supports both real- and protected-mode applications for the embedded Intel architecture, including the new 32-bit Intel386™ EX embedded microprocessor. Soft-Scope supports C/C++ compilers from Microsoft, Borland, Watcom, MetaWare and Intel and is available for both Microsoft Windows\* and DOS. Several configurations are available including Soft-Scope/CSi-Mon, Soft-Scope/iRMX\*, Soft-Scope/iRMX EMB and others. Soft-Scope also supports the CodeTAP\* and TX386 in-circuit emulators, Tektronix logic analyzers, Ampro embedded PC boards and iRMX, C EXECUTIVE\*, MTOS\*, AMX\*, SMX\* and ROM-DOS\* real-time operating system kernels.

Soft-Scope communicates with our embedded CSi-Mon monitor via your PC's serial port. CSi-Mon can also be accessed via your target board's EPROM socket when used with the PromICE ROM emulator, eliminating the need for a serial port on the target. The complete CSi-Mon source code is included in the

package plus a royalty-free license that allows you to incorporate CSi-Mon into your product, making it easy to create startup code, install bug fixes and perform on-site testing.

CSi-Locate, available separately, is a locator utility that prepares your DOS and Windows executable files for debugging with Soft-Scope and burning into EPROM. It accepts .exe and .map files from Microsoft, Borland or Watcom C/C++ compilers and generates a .dbg debug file for Soft-Scope and .hex or .bin files for your EPROM programmer.

HOST SYSTEMS SUPPORTED:  
IBM-PC running Windows, Windows\* 95, Windows NT\* and DOS

PROCESSORS SUPPORTED:  
Entire Intel Processor Family

AVAILABILITY:  
Now

CONTACT:  
Concurrent Sciences, Inc.  
P.O. Box 9666  
530 South Asbury  
Moscow, ID 83843

Phone: (800) 897-3001 (USA)  
(208) 882-0445

FAX: (208) 882-9774  
e-mail: info@consci.com

WWW: <http://www.debugger.com>



Concurrent Sciences, Inc.